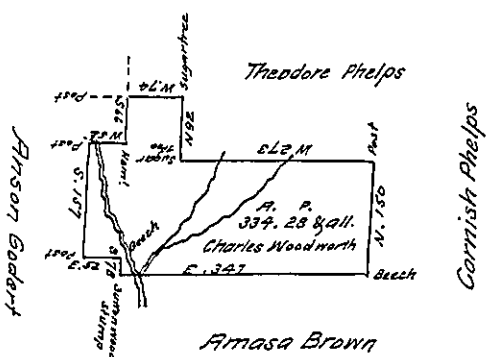


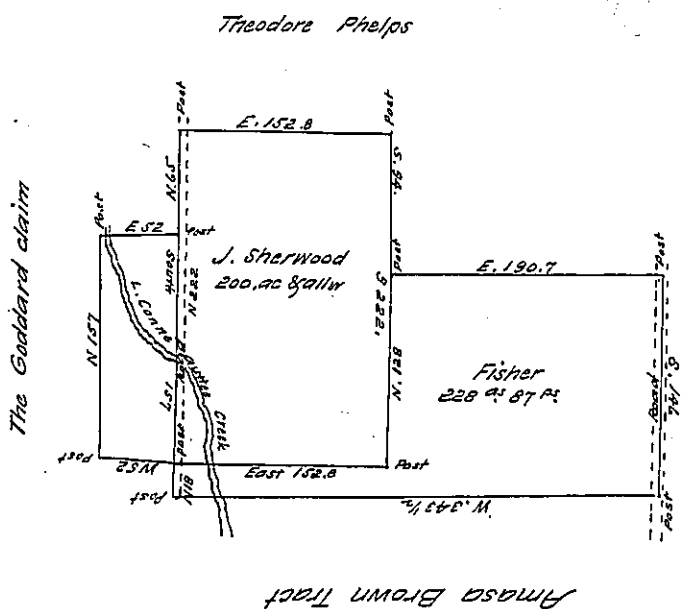
A draught of a tract of land in Waterford Township Erie County on the little Conneauttee surveyed the 7th July 1802, for Charles Woodworth, by virtue of his actual settlement residence and improvement, containing 433 acres & 32 perches &c Improved July 1796. John Cochran D.S.

A true copy from the survey book kept by John Cochran Esq D.S. of Erie County Feby 2nd 1837 S. Skinner D.S. E.Cy



Erie County - Conneauttee Township. Surveyed for Charles Woodworth on the 25th day of October 1806 and returned, by virtue of his warrant dated Augst 14th 1805. Thomas Smith D.S.

A true return from the survey book kept by Thomas Smith Esq D.S. of Erie County Feby 27th 1837. S. Skinner D.S. E.C.



A draught of a tract of land situate in Conneauttee Township Erie County on the little Conneauttee Creek, Resurveyed Oct. 25, 1833, for John Sherwood assignee of Charles Woodworth, by virtue of his actual settlement residence & improvement containing Four hundred acres ^{87 Perchs} & allowance - Cyrenius E. Webster D.S.

A true return from the survey book kept by C. E. Webster Esq. D.S. of Erie County S. Skinner D.S.

Erie
Chas Woodworth
428^{ac} 87^{Ps}
200^{ac} Ret'd &c. 23^d March
1837
228^{ac} 87^{Ps} Ret'd &c 1st May 1839

J. Sherwood
John Taylor Esq. S.G.
Harrisburg Pa.
S. Skinner

5
Accepted 14th March 1837.